

RGS

FURNITURE

COLLECTIONS BROCHURE



TABLES

FURNITURE THAT ADAPTS

TABLES

Contents:

Tabletops

Tabletop Laminate Colors 3

Tabletops 4 - 6

Table Legs

- Post Legs 7 - 11

- X-Base 12 - 13

- T-Base 14 - 15

- Flip Top 16 - 17

- C-Leg 18

Summit Tables 19

ICON KEY



Items with an extended lead time



Special Order Item



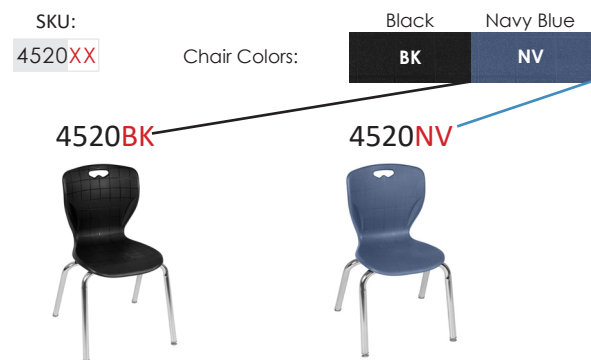
TAA compliant* materials that are approved for federal offices and U.S. government buildings

* "Trade Agreement Act — Designated Countries."
Department Of Veterans Affairs
Office of Acquisition and Logistics,
01 February 2016, Web. 28 November 2016
<<http://www.va.gov/oal/business/fss/taa.asp>>

RGS
FURNITURE

SKU COLOR KEY

Replace "XX" with desired color code when placing an order.
Example:



TEL: 866.816.9822

FAX: 330.848.6260

WEB: regencyof.com

WEB: rgsfurniture.com

2375 ROMIG RD. AKRON, OH 44320

TABLETOP LAMINATE COLORS

Replace "XX" with desired laminate color code when placing an order.

Standard / In Stock Laminates


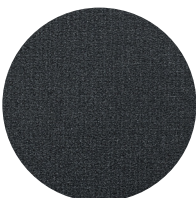


1" thick thermal fused melamine laminate work surface with a 25mm corner radius and black T-mold edge band.
Always in stock and ships same day! **Refer to Standard Price when ordering.**

					
CHERRY (CH)	GREY (GY)	MAHOGANY (MH)	MAPLE (PL)	NEO WALNUT (NW)	NOBLE OAK (NO)

Low Pressure Laminates



Low Pressure 1" thick melamine laminate work surface with a square corner and black T-mold or PVC edge band.
Low Pressure Laminate Tops are made in America. **Refer to Low Pres. Price when ordering.**

					
BERGEN ASH (BA)	CARBON MESH (CM)	GREY (GR)	MAHOGANY (MG)	STERLING ASH (SA)	TALAS CHERRY (TC)

High Pressure Laminates



High Pressure 1.25" thick Formica melamine laminate work surface with a square corner and black PVC edge band.
Laminates made in America. **Refer to High Pres. Price when ordering.**

					
ASHWOOD BONE (AB)	BRITE WHITE (BW)	CASCARA TEAKWOOD (CT)	GRAYED OAK (GO)	GLAMOUR CHERRY (GC)	HAZEL WALNUT (HW)
					
INKED OAK (IO)	NATURAL MAPLE (NM)	PLANKED COFFEE OAK (PC)	SMOKY BROWN PEAR (SP)	SWEDE RIFT OAK (SR)	WAXED MAPLE (WM)

TABLE TOPS

- Table tops are constructed of a 1-inch thick thermal fused melamine laminate finished with a black T-Mold edge banding
- Laminates are scratch, stain and scald resistant

Rectangle Table Top - 30" Deep

Description	RGS Item #	ReGENCY Item #	Dimensions (W" x D" x H")	Weight (lbs)	Shipping Method	Standard Price	Low Pres. Price	High Pres. Price
72" x 30" Standard Rectangle Table Top	RGS-TTRC7230XX	TTRC7230XX	72 x 30 x 1	89	LTL	\$463	\$600	\$1,021
66" x 30" Standard Rectangle Table Top	RGS-TTRC6630XX	TTRC6630XX	66 x 30 x 1	70	LTL	\$390	\$507	\$861
60" x 30" Standard Rectangle Table Top	RGS-TTRC6030XX	TTRC6030XX	60 x 30 x 1	62	LTL	\$350	\$455	\$774
48" x 30" Standard Rectangle Table Top	RGS-TTRC4830XX	TTRC4830XX	48 x 30 x 1	47	LTL	\$269	\$349	\$592
42" x 30" Standard Rectangle Table Top	RGS-TTRC4230XX	TTRC4230XX	42 x 30 x 1	39	GROUND	\$256	\$333	\$564



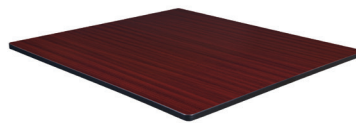
Rectangle Table Top - 24" Deep

84" x 24" Standard Rectangle Table Top	RGS-TTRC8424XX	TTRC8424XX	84 x 24 x 1	88	LTL	\$399	\$524	\$880
72" x 24" Standard Rectangle Table Top	RGS-TTRC7224XX	TTRC7224XX	72 x 24 x 1	65	LTL	\$319	\$420	\$704
66" x 24" Standard Rectangle Table Top	RGS-TTRC6624XX	TTRC6624XX	66 x 24 x 1	56	LTL	\$293	\$384	\$646
60" x 24" Standard Rectangle Table Top	RGS-TTRC6024XX	TTRC6024XX	60 x 24 x 1	47	LTL	\$244	\$322	\$539
48" x 24" Standard Rectangle Table Top	RGS-TTRC4824XX	TTRC4824XX	48 x 24 x 1	39	LTL	\$202	\$266	\$446
42" x 24" Standard Rectangle Table Top	RGS-TTRC4224XX	TTRC4224XX	42 x 24 x 1	34	GROUND	\$176	\$232	\$388
26" x 20" Standard Braxton Table Top	RGS-TTRC2620XX	TTRC2620XX	26 x 20 x 1	13	GROUND	\$122	\$162	\$273



Square Table Top

Description	Item #	Item #	Dimensions (W" x D" x H")	Weight (lbs)	Shipping Method	List Price	Low Pres. Price	High Pres. Price
48" Standard Square Table Top	RGS-TTSQ4848XX	TTSQ4848XX	48 x 48 x 1	84	LTL	\$371	\$481.00	\$817.00
42" Standard Square Table Top	RGS-TTSQ4242XX	TTSQ4242XX	42 x 42 x 1	59	GROUND	\$325	\$423.00	\$718.00
36" Standard Square Table Top	RGS-TTSQ3636XX	TTSQ3636XX	36 x 36 x 1	49	GROUND	\$279	\$362.00	\$616.00
30" Standard Square Table Top	RGS-TTSQ3030XX	TTSQ3030XX	30 x 30 x 1	31	GROUND	\$201	\$261.00	\$444.00



Round Table Top

48" Standard Round Table Top	RGS-TTRD48XX	TTRD48XX	48 x 48 x 1	69	LTL	\$373	\$534.00	\$908.00
42" Standard Round Table Top	RGS-TTRD42XX	TTRD42XX	42 x 42 x 1	53	GROUND	\$327	\$425.00	\$722.00
36" Standard Round Table Top	RGS-TTRD36XX	TTRD36XX	36 x 36 x 1	39	GROUND	\$283	\$368.00	\$625.00
30" Standard Round Table Top	RGS-TTRD30XX	TTRD30XX	30 x 30 x 1	27	GROUND	\$203	\$264.00	\$449.00



SPECIALTY TABLETOP SIZES

Rectangle Specialty Table Top



Description	RGS Item #	ReGENCY Item #	Dimensions (W" x D" x H")	Weight (lbs)	Shipping Method	Standard Price	Low Pres. Price	High Pres. Price
96" x 30" Standard Rectangle Table Top	RGS-TTRC9630XX	TTRC9630XX	96 x 30 x 1	120	LTL	\$597	\$997.00	\$1,696.00
84" x 30" Standard Rectangle Table Top	RGS-TTRC8430XX	TTRC8430XX	84 x 30 x 1	106	LTL	\$539	\$900.00	\$1,531.00
36" x 30" Standard Rectangle Table Top	RGS-TTRC3630XX	TTRC3630XX	36 x 30 x 1	34	GROUND	\$220	\$366.00	\$622.00
96" x 24" Standard Rectangle Table Top	RGS-TTRC9624XX	TTRC9624XX	96 x 24 x 1	106	LTL	\$580	\$979.00	\$1,648.00
36" x 24" Standard Rectangle Table Top	RGS-TTRC3624XX	TTRC3624XX	36 x 24 x 1	28	GROUND	\$225	\$380.00	\$639.00
30" x 24" Standard Rectangle Table Top	RGS-TTRC3024XX	TTRC3024XX	30 x 24 x 1	24	GROUND	\$204	\$346.00	\$581.00



Peninsula Table Top



72" x 36" Standard Peninsula Table Top	RGS-TTP7236XX	TTP7236XX	72 x 36 x 1	88	LTL	\$662	\$1,044.00	\$1,776.00
72" x 30" Standard Peninsula Table Top	RGS-TTP7230XX	TTP7230XX	72 x 30 x 1	72	LTL	\$478	\$785.00	\$1,335.00
66" x 36" Standard Peninsula Table Top	RGS-TTP6636XX	TTP6636XX	66 x 36 x 1	74	LTL	\$629	\$988.00	\$1,681.00
66" x 30" Standard Peninsula Table Top	RGS-TTP6630XX	TTP6630XX	66 x 30 x 1	61	LTL	\$465	\$731.00	\$1,242.00
60" x 36" Standard Peninsula Table Top	RGS-TTP6036XX	TTP6036XX	60 x 36 x 1	60	LTL	\$577	\$908.00	\$1,544.00
60" x 30" Standard Peninsula Table Top	RGS-TTP6030XX	TTP6030XX	60 x 30 x 1	50	LTL	\$424	\$676.00	\$1,149.00

Peninsula Top Post Leg	IO-KPL2629BK	MKPL2629BK	6 x 6 x 28	28	GROUND	\$111		
------------------------	--------------	------------	------------	----	--------	-------	--	--

Features an adjustable leveling glide. Height adjustable from 22-28". Used to support Peninsula table tops when creating a P-Top L-Desk or P-Top U-Desk.



IO-KPL2629BK



Half Round Table Top



60" Standard Half Round Table Top	RGS-TTHR60XX	TTHR60XX	60 x 30 x 1	69	LTL	\$322	\$555.00	\$943.00
48" Standard Half Round Table Top	RGS-TTHR48XX	TTHR48XX	48 x 24 x 1	45	LTL	\$142	\$308.00	\$523.00
42" Standard Half Round Table Top	RGS-TTHR42XX	TTHR42XX	42 x 21 x 1	37	GROUND	\$126	\$276.00	\$470.00
36" Standard Half Round Table Top	RGS-TTHR36XX	TTHR36XX	36 x 18 x 1	33	GROUND	\$96	\$226.00	\$384.00

RGS-TTHR48PL



Trapezoid Table Top



Description	RGS Item #	ReGENCY Item #	Dimensions (W" x D" x H")	Weight (lbs)	Shipping Method	List Price	Low Pres. Price	High Pres. Price
72" x 30" Standard Trapezoid Table Top	RGS-TTTZ7230XX	TTTZ7230XX	72 x 30 x 1	89	LTL	\$508	\$798.00	\$1,358.00
66" x 30" Standard Trapezoid Table Top	RGS-TTTZ6630XX	TTTZ6630XX	66 x 30 x 1	70	LTL	\$499	\$785.00	\$1,335.00
60" x 30" Standard Trapezoid Table Top	RGS-TTTZ6030XX	TTTZ6030XX	60 x 30 x 1	62	LTL	\$288	\$494.00	\$841.00
48" x 24" Standard Trapezoid Table Top	RGS-TTTZ4824XX	TTTZ4824XX	48 x 24 x 1	29	LTL	\$142	\$322.00	\$546.00



Specialty Classroom Desk Tops



26" x 24" Ferris School Desktop	RGS-TTFS2624XX	TTFS2624XX	26 x 24 x .75	15	GROUND	\$139.00	\$182.00	\$310.00
26" x 18.5" Rectangle School Desktop	RGS-TTRC1826XX	TTRC1826XX	26 x 18.5 x .75	12	GROUND	\$106.00	\$140.00	\$238.00
36" x 23" Trapezoid School Desktop	RGS-TTTZ362319XX	TTTZ362319XX	36 x 23 x .75	28	GROUND	\$152.00	\$200.00	\$341.00
60" x 24" Lippmann School Desktop	RGS-LPMSD3422XX	LPMSD3422XX	60 x 24 x 1	56	LTL	\$362.00	\$652.00	\$1,108.00
28" x 28" Boomerang School Desktop	RGS-BMG2828XX	TBGMG2828PL	28 x 28 x .75	14	GROUND	\$255.00	\$335.00	\$571.00
60" I-Promise 2-Student Desktop	RGS-TTIP6024XX	TTIP6024XX	60 x 24 x 1	37	LTL	\$318.00	\$417.00	\$709.00
33" x 21" Amoeba School Desktop	RGS-TBA3321XX	TBA3321XX	33 x 21 x 1	15	GROUND	\$380.00	\$499.00	\$848.00

RGS-TTFS2624PL

Ways to Arrange:



RGS-TTRC1826GY

Ways to Arrange:



RGS-TTTZ362319CH

Ways to Arrange:



RGS-TTIP6024GY

RGS-BMG2828PL

RGS-TBA3321PL



RGS-LPMSD3422MH



Specialty Classroom Table Tops



72" x 48" Standard Kidney Table Top	RGS-TTKY7248XX	TKKY7248XX	72 x 48 x 1.25	101	LTL	\$469	\$938.00	\$1,594.00
66" x 60" Standard Horseshoe Table Top	RGS-TTHS6660XX	TTHS6660XX	60 x 66 x 1.25	111	LTL	\$480	\$853.00	\$1,451.00
60" Standard Flower Table Top	RGS-TTFW60XX	TTFW60XX	60 x 60 x 1.25	98	LTL	\$480	\$826.00	\$1,405.00
48" Standard Clover Table Top	RGS-TTCL48XX	TTCL48XX	48 x 48 x 1.25	52	LTL	\$251	\$421.00	\$715.00
30" Standard Clover Table Top	RGS-TTCL30XX	TTCL30XX	30 x 30 x 1.25	48	LTL	\$251	\$421.00	\$715.00

RGS-TTKY7248PL

RGS-TTHS6660CH

RGS-TTFW60GY

RGS-TTCL48MH



TABLE LEGS

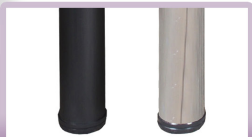
OTTO POST

Give everyone more room with Otto tables. Otto post legs come four to a set and include adjustable leveling glides so you have a steady table with no wobble. Assembly is a snap with just a few screws.



Laminate

Scratch, stain and scald resistant and wipes clean easily



Durable

Legs are constructed in either chrome or black tubular steel



Level Guides

Adjustable leveling glides on the bottom of each leg

Description	RGS Item #	ReGENCY Item #	Dimensions (W" x D" x H")	Weight (lbs)	Shipping Method	List Price
Otto Post Table Legs (Set of 4)	OT-TBP27XX	MTBP27XX	10 x 10 x 28	9	GROUND	\$131

Colors:	Black	Chrome
	BK	CM



OTTO MOBILE

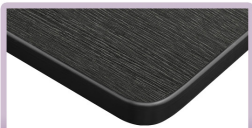
Otto mobile post legs come four to a set and include locking casters. Assembly is a snap with just a few screws.

POST LEGS



Laminate

Scratch, stain and scald resistant and wipes clean easily



Safer

Rounded Corners make it safe for all environments



Casters

Mobile & locking casters



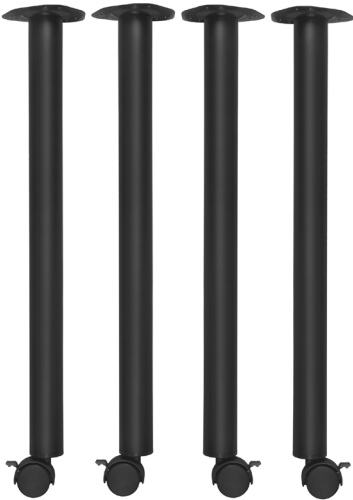
Durable

Legs are constructed of durable tubular steel with hard plastic casters

Description	RGS Item #	ReGENCY Item #	Dimensions (W" x D" x H")	Weight (lbs)	Shipping Method	List Price
Otto Post Table Leg with Casters (Set of 4)	OT-TBC28BK	MTBC28BK	5 x 5 x 28	8	GROUND	\$140

Black

Color:



OTTO ADJUSTABLE

Otto adjustable post legs come four to a set and are height adjustable to accommodate students of all ages. Height is easy for adults to adjust by loosening and tightening a bolt with the included hex key.



Laminate

Scratch, stain and scald resistant and wipes clean easily



Safer

Rounded Corners make it safe for all environments



Glides or Casters

Adjustable Glides or mobile locking casters



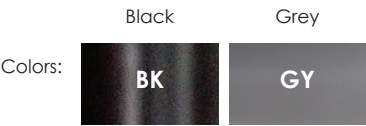
Height Adjustable

Height is easy to adjust by loosening and tightening a bolt with included hex key

POST LEGS

Description	RGS Item #	REGENCY Item #	Dimensions (W" x D" x H")	Weight (lbs)	Shipping Method	List Price
Otto Adjustable Leg (Set of 4)	OTA-BP27BK	MABP27BK	2 x 2 x 22-33	13	GROUND	\$313
Features two-tone (black or grey) and chrome finish.						
Casters for Otto Adjustable Leg (Set of 4)	OTA-BP27CASTERS	MABP27CASTERS	2 x 2 x 3	1	GROUND	\$188

Interchangeable with leveling glides on Otto Adjustable Height Legs (see above).



OTTO FOLDING

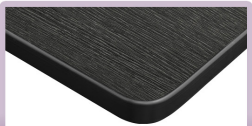
Otto folding post legs come four to a set and can collapse while attached to a tabletop. A simple twist of each leg unlocks it and allows it to fully collapse with one hand. Lock into place with another twist in the opposite direction.

POST LEGS



Laminate

Scratch, stain and scald resistant and wipes clean easily



Safer

Rounded Corners make it safe for all environments



Leveling Glides

Adjustable leveling glides on the bottom of each leg



Folding Legs

Collapsible legs for storage

Description	RGS Item #	REGENCY Item #	Dimensions (W" x D" x H")	Weight (lbs)	Shipping Method	List Price
Otto Post Folding Table Leg (Set of 4)	OT-TBF28BK	MTBF28BK	4.5 x 4.5 x 28	7.5	GROUND	\$234

Black

Color:

BK



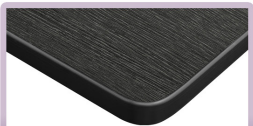
DIEGO TAPERED

Diego table legs are a mid-century modern take on the standard post leg and have an attractive tapered end. Diego legs come four to a set and can be attached to nearly any wood table or desk top.



Laminate

Scratch, stain and scald resistant and wipes clean easily



Safer

Rounded Corners make it safe for all environments



Leveling Glides

Adjustable leveling glides on the bottom of each leg



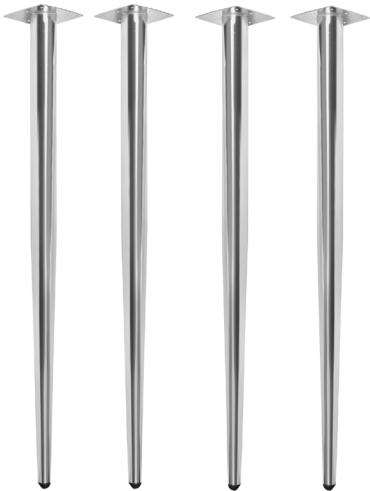
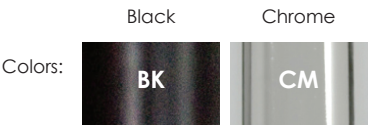
Tapered Design

Tapered Legs are constructed of durable yet lightweight steel

POST LEGS

Description	RGS Item #	REGENCY Item #	Dimensions (W" x D" x H")	Weight (lbs)	Shipping Method	List Price
Diego Post Table Legs (Set of 4)	DG-TPL27XX	MTPL27XX	10 x 10 x 28	9	GROUND	\$228

Feature a sleek tapered steel design that include adjustable glides.



REID X-BASE

No matter what room you're planning, let the Reid Collection take you there. These versatile tables are at home in stylish cafe or coffee shop settings as well as lunch rooms.

X-BASES



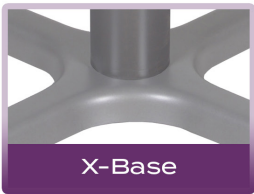
Laminate

Scratch, stain and scald resistant and wipes clean easily



Safer

Rounded Corners make it safe for all environments



X-Base

is constructed of sturdy stamped steel and includes hidden leveling glides



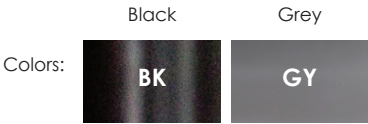
Durable

Base Grey or Black color options



Description	RGS Item #	REGENCY Item #	Dimensions (W" x D" x H")	Weight (lbs)	Shipping Method	List Price
Reid X-Base for 48" Table Tops	RD-TBX36	MTBX36	36 x 36 x 28	30	GROUND	\$328
Reid X-Base for 36-42" Table Tops	RD-TBX30	MTBX30	30 x 30 x 28	20	GROUND	\$236
Reid X-Base for 30" Table Tops	RD-TBX22	MTBX22	22 x 22 x 28	18	GROUND	\$201

Feature black tubular steel posts and solid steel x-bases that include hidden adjustable glides. Protected by a powder coated finish.



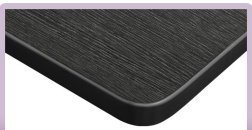
STARK X-BASE

The elegant Stark collection puts the class in classroom. These versatile tables are at home in classrooms, lunch rooms as well as stylish restaurant settings.



Laminate

Scratch, stain and scald resistant and wipes clean easily



Safer

Rounded Corners make it safe for all environments



Level Guides

Adjustable leveling glides on the bottom of each leg



Durable

Legs are constructed in strong tubular steel X-Base

X-BASES

Description	RGS Item #	REGENCY Item #	Dimensions (W" x D" x H")	Weight (lbs)	Shipping Method	List Price
Stark X-Base for 48" Table Tops	SK-TBX36	MKTBX36	36 x 36 x 28	23	GROUND	\$342
Stark X-Base for 36-42" Table Tops	SK-TBX30	MKTBX30	30 x 30 x 28	19	GROUND	\$282
Stark X-Base for 30" Table Tops	SK-TBX22	MKTBX22	22 x 22 x 28	15	GROUND	\$252

Feature black tubular steel posts and x-bases that include adjustable glides. Protected by a powder coated finish.

Black

Color:

BK



STARK T - BASE LEGS & CASTERS

The Stark T-Base Legs come 2 to a set and can be easily attached to any rectangular tabletop. Optional Casters provide a mobile option making any Stark table suitable for computer labs, training rooms, classrooms and more.



Laminate
Scratch, stain and scald resistant and wipes clean easily



Safer
Rounded Corners make it safe for all environments



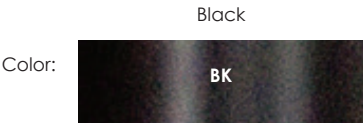
Durable
Legs are constructed tubular steel base



Glides or Casters
Stylish raised glides or locking casters

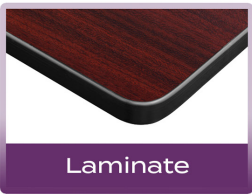
T-BASES

Description	RGS Item #	ReGENCY Item #	Dimensions (W" x D" x H")	Weight (lbs)	Shipping Method	List Price
Stark T-Base Legs (Set of 2)	SK-TBT22	MKTBT22	22 x 5 x 28	28	GROUND	\$315
Feature a black tubular steel T-base with adjustable glides.						
Stark T-Base Casters (Set of 4)	SK-TBC4	MKTBC4	3 x 5 x 3	1	GROUND	\$123
Feature an easy to install design and locking capabilities.						



REID T-BASE

No matter what room you're planning, let the Reid Collection take you there. These versatile tables are at home in stylish cafe or coffee shop settings as well as lunch rooms. This Reid T-Base stands at a standard 28-inches tall and comes with 2 legs to a set.



Laminate
Scratch, stain and scald resistant and wipes clean easily



Safer
Rounded Corners make it safe for all environments



Leveling Glides
Hidden adjustable leveling glides on the bottom of each leg



Durable
Constructed of tubular steel posts and solid steel T-Bases

T-BASES

Description	RGS Item #	ReGENCY Item #	Dimensions (W" x D" x H")	Weight (lbs)	Shipping Method	List Price
Reid T-Base Legs (Set of 2)	RD-TBT22BK	MTBT22	22 x 5 x 28	30	GROUND	\$300

Feature a black tubular steel posts and solid steel bases with hidden adjustable glides. Elevates tabletop to 29".

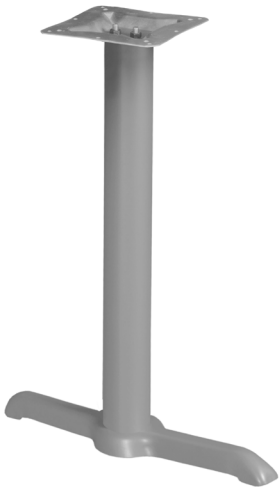
Colors:

Black

BK

Grey

GY



STARK FLIP TOP

Set up a meeting room in a flash with Stark Flip Top Tables. Unlock the quick-release lever and flip down the entire tabletop to nest together when not in use.



FLIP TOP

Description	RGS Item #	REGENCY Item #	Dimensions (W" x D" x H")	Weight (lbs)	Shipping Method	List Price
Flip Top Base for 72"-84" Table Tops	SK-TBFT6524	MKTBFT6524	70 x 21 x 28	42	GROUND	\$616
Flip Top Base for 48"-60" Table Tops	SK-TBFT4824	MKTBFT4824	46 x 21 x 28	34	GROUND	\$547

Feature black tubular steel bases with locking casters. A quick-release locking level pivots table tops vertically on a spring loaded hinge.

Color:

Black

BK



STARK FLIP TOP WITH MODESTY

Round perforations give the Modesty Panel a stylish look while maintaining kneespace privacy in open learning environments.



Laminate

Scratch, stain and scald resistant and wipes clean easily



Safer

Rounded Corners make it safe for all environments



Flip-Top

Table top flips down to nest together when not in use



Unlock-Release

Unlock the quick-release lever and flip down the tabletop



Modesty Panel

Provides kneespace privacy in open learning environments

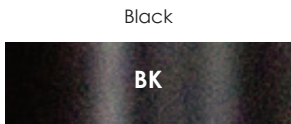


Casters

Locking casters which makes the table mobile

Description	RGS Item #	ReGENCY Item #	Dimensions (W" x D" x H")	Weight (lbs)	Shipping Method	List Price
Flip Top Base with Modesty for 72"-84" Table Tops	SK-TBFTM6524	MKTBTM6524	70 x 21 x 28	47	GROUND	\$769
Flip Top Base with Modesty for 48"-60" Table Tops	SK-TBFTM4824	MKTBTM4824	46 x 21 x 28	37	GROUND	\$692

Feature black tubular steel bases with locking casters. A quick-release locking level pivots table tops vertically on a spring loaded hinge. Modesty Panel for knee-space privacy.



FLIP TOP



ION TRAINING TABLES

Good looking with amazing interior wire management capabilities, Ion Training Tables bring a modern yet functional edge to any training room or lab.



Laminate

Scratch, stain and scald resistant and wipes clean easily



Safer

Rounded Corners make it safe for all environments



Adjustable Glides

ensure a level worksurface



Wire Management

Vented compartment with removable cover on each leg for wires to run inside legs and up to desktops for instant connectivity

Description	TAA COMPLIANT	RGS Item #	REGENCY Item #	Dimensions (W" x D" x H")	Weight (lbs)	Shipping Method	List Price
84" x 24" Training Table		IO-TT8424XX	MFTT8424XX	84 x 24 x 29	124	LTL	\$1014
72" x 30" Training Table		IO-TT7230XX	MFTT7230XX	72 x 30 x 29	121	LTL	\$1057
72" x 24" Training Table		IO-TT7224XX	MFTT7224XX	72 x 24 x 29	111	LTL	\$913
66" x 30" Training Table		IO-TT6630XX	MFTT6630XX	66 x 30 x 29	106	LTL	\$980
66" x 24" Training Table		IO-TT6624XX	MFTT6624XX	66 x 24 x 29	101	LTL	\$883
60" x 24" Training Table		IO-TT6024XX	MFTT6024XX	60 x 24 x 29	87	LTL	\$829
48" x 24" Training Table		IO-TT4824XX	MFTT4824XX	48 x 24 x 29	76	LTL	\$749
42" x 24" Training Table		IO-TT4224XX	MFTT4224XX	42 x 24 x 29	70	LTL	\$715

Feature wire management Computer Table Legs and (2) modesty cabling cutouts.

Black

Base Color:



C-LEGS



SUMMIT TRAINING TABLE

Sturdy steel bases and laminate tops bring a modern and functional edge to any classroom, training room, office or industrial workplace.



Stylish

1¼-inch thick high-pressure laminate top with gray 9mm protective edge banding.



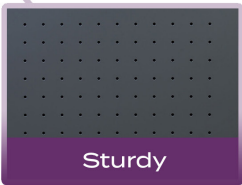
Organized

Built-in wire management grommets



Level

round steel tube legs, equipped with leveling glides



Sturdy

16-gauge steel, the desk base features a scratch-resistant, powder-coated, grey-painted finish.

Description	RGS Item #	ReGENCY Item #	Dimensions (W" x D" x H")	Weight (lbs)	Shipping Method	List Price
48" x 30" Table	SM-66120TDMO	66120TDMO	48 x 30 x 29	42	GROUND	\$616
60" x 30" Table	SM-66150TDMO	66150TDMO	60 x 30 x 29	34	GROUND	\$547

Medium Oak



Feature



SUMMIT TABLES

RGS, Inc. Limited Warranty

RGS products are warranted against manufacturers defect in material and workmanship for the usable life of the product for the original owner, as defined as follows:

One year – RTA and power components

Two years – gas cylinders, control mechanisms, upholstery and foam

Five years – "Accessories," chair bases, metal and wood chair frames, casters, glides, any and all wood or polymer based components

Ten years – All laminate, wood or veneer casegoods, metal desk pedestals, metal shelving units, metal table legs and bases, and carts

To Obtain Service Under the Warranty

Should any component be found to be defective, the customer should contact the dealer that originally sold them the product. The dealer will gather information on the product, including the product number or name, nature of the defect, original sale date, and conditions product is being used, along with the defective product or part. The dealer will provide this information to RGS, Inc's customer service department along with their proof of purchase, who will determine whether a replacement part or product is to be provided free of charge under warranty. The dealer will return the defective part or product freight prepaid to RGS, Inc. Upon receipt of the defective part or product, a replacement will be sent to the dealer.

Failure to provide the requested information – including proof of purchase – or to return the defective part will result in the request for a warranty part or product to be rejected.

Exclusions

This warranty does not apply to the following:

- Normal "wear and tear", which are to be expected over the course of ownership.
- Seating products used for more than 8 hours in a given day or 40 hours in a given week.
- Seating products used by persons weighing over the maximum capacity of 250 lbs. with the exception of the RGS-305 Quinn stack chair tested to 400 lbs., and the RGS-203 Azure BT tested to 500 lbs.
- Products used for rental purposes.
- Damaged caused by the carrier in transit (which should be handled per the receiving instructions below) or damage caused during installation or assembly.
- Failures due the negligence of the customer to properly assemble or regularly maintain (including but not limited to cleaning, lubricating, tightening all screws, bolts and cams every 3-6 months) their product.
- Variations in leather and wood finishes which are to be expected due to their nature as natural materials.
- Products which have been altered, are missing components, or have been assembled in a manner inconsistent with the manufacturer-provided assembly instructions.
- Tufted buttons on any products.

The warranty applies only to products. RGS Inc. is in no way responsible for loss, inconvenience, or other damages or expenses resulting from a product defect. This warranty is valid in the USA only.

Effective Dates

The above warranty is effective for any products sold on or after January 1, 2020. The terms of this warranty may be altered at a future date by the manufacturer, upon notification of the manufacturer's authorized resellers.

Terms of Sale

Accounts will be offered terms of Net 20 days with established satisfactory credit. All other orders require payment in advance by check or credit card (Visa or Mastercard only). Past due accounts are subject to a finance charge of 1.5% per month. Accounts with a past due balance or unpaid finance charges must clear this balance prior to any new orders or warranty claims being accepted.

Shipping Information

TITLE OF GOODS passes to purchaser and our responsibility ceases when shipment is accepted by any carrier from one of our Distribution Centers. All products are shipped by FedEx Ground or Common Carrier, freight prepaid dock-to-dock, unless otherwise specified on your purchase order. Any incidental charges – including but not limited to inside delivery, liftgate, residential, reconsignment – will be charged back.

Upon Receiving Your Shipment

Upon receiving your shipment and before signing for it, count the cartons to ensure all products have been received and visually inspect all packages for signs of damage in transit. Should there be any shortage or signs of possible damage, note all findings on the driver's paperwork. Keep your copy of the paperwork.

If damage is discovered, either visibly on the carton or concealed, retain all product and packaging for inspection by the freight carrier. Contact the freight carrier immediately, and in no more than 15 days from the date of delivery to make a report and submit a claim. The freight carrier will then provide you with the procedure. In the meantime, contact RGS to order any replacement parts or product.

Returns

All product returns will result in a merchandise credit. Returned merchandise will not be accepted if sent freight collect or without prior written authorization. Ship freight prepaid in original carton. Customer will be responsible for any damage on return and the cost of re-boxing if required prior to any credits being issued.

Order Changes or Cancellations

Due to the quick ship nature of RGS Office Furniture products, we must limit customer changes and cancellations. All orders ship within 72 hours of receiving an approved order. Orders canceled or changed after shipment will be subject to a 25% restocking charge plus the return freight charges. All changes or cancellations must be in writing.

Exceptions

There are no exceptions to these terms of sale unless otherwise specified in a customer contract, signed by an officer of RGS, Inc. and an officer of the customer company.

RGS

CORPORATE OFFICE:
2375 ROMIG RD.
AKRON, OH 44320

TEL: 866-816-9822
WEB: [RGSFURNITURE.COM](https://rgsfurniture.com)



[FACEBOOK.COM/RGSFURNITURE](https://facebook.com/rgsfurniture)



[INSTAGRAM.COM/RGS_FURNITURE](https://instagram.com/rgs_furniture)

©2024 RGS Seating Inc.
All Rights Reserved.